

GFRA4 Antibody

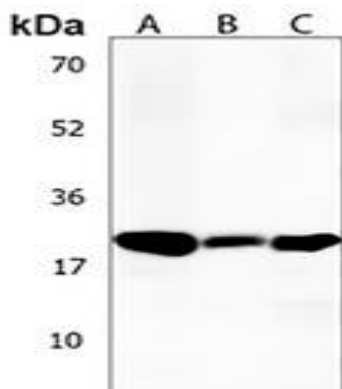
Basic information:

| | | | |
|-----------------------|---|-------------------|------------|
| Catalog No.: | UPA12423 | Source: | Rabbit |
| Size: | 50ul/100ul | Clonality: | Polyclonal |
| Concentration: | 1mg/ml | Isotype: | IgG |
| Purification: | The antibody was purified by immunogen affinity chromatography. | | |

Useful Information:

| | |
|----------------------|---|
| Applications: | WB (1:500 - 1:1000) |
| Reactivity: | Human |
| Specificity: | Recognizes endogenous levels of GFRA4 protein. |
| Immunogen: | KLH-conjugated synthetic peptide encompassing a sequence within the Central region of human GFRA4. The exact sequence is proprietary. |
| Description: | Rabbit polyclonal antibody to GFRA4 |
| Uniprot: | Q9GZZ7 |
| BiowMW: | Refer to Figures |
| Buffer: | Liquid in 0.42% Potassium phosphate, 0.87% Sodium chloride, pH 7.3, 30% glycerol, and 0.01% Thimerosal. |
| Storage: | Shipped at 4°C. Upon delivery aliquot and store at -20°C for one year. Avoid freeze/thaw cycles. |
| Note: | For research use only, not for use in diagnostic procedure. |

Data:



Western blot analysis of GFRA4 expression in HL60 (A), ZR751 (B), MDAMB453 (C) whole cell lysates. (Predicted band size: 31 kD; Observed band size: 26 kD)