

## SAPCD2 Antibody

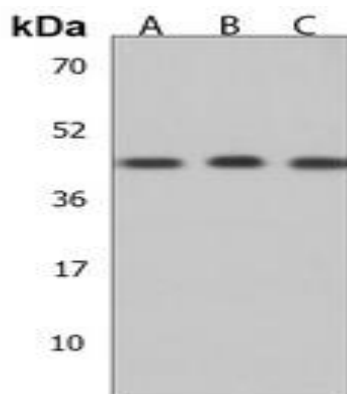
### Basic information:

<b>Catalog No.:</b>	UPA14752	<b>Source:</b>	Rabbit
<b>Size:</b>	50ul/100ul	<b>Clonality:</b>	Polyclonal
<b>Concentration:</b>	1mg/ml	<b>Isotype:</b>	IgG
<b>Purification:</b>	The antibody was purified by immunogen affinity chromatography.		

### Useful Information:

<b>Applications:</b>	WB (1:500 - 1:1000)
<b>Reactivity:</b>	Human
<b>Specificity:</b>	Recognizes endogenous levels of SAPCD2 protein.
<b>Immunogen:</b>	KLH-conjugated synthetic peptide encompassing a sequence within the C-terminal region of human SAPCD2. The exact sequence is proprietary.
<b>Description:</b>	Rabbit polyclonal antibody to SAPCD2
<b>Uniprot:</b>	Q86UD0
<b>BiowMW:</b>	Refer to Figures
<b>Buffer:</b>	Liquid in 0.42% Potassium phosphate, 0.87% Sodium chloride, pH 7.3, 30% glycerol, and 0.01% Thimerosal.
<b>Storage:</b>	Shipped at 4°C. Upon delivery aliquot and store at -20°C for one year. Avoid freeze/thaw cycles.
<b>Note:</b>	For research use only, not for use in diagnostic procedure.

### Data:



Western blot analysis of SAPCD2 expression in HepG2 (A), MCF7 (B), PC3 (C) whole cell lysates. (Predicted band size: 42 kD; Observed band size: 43 kD)